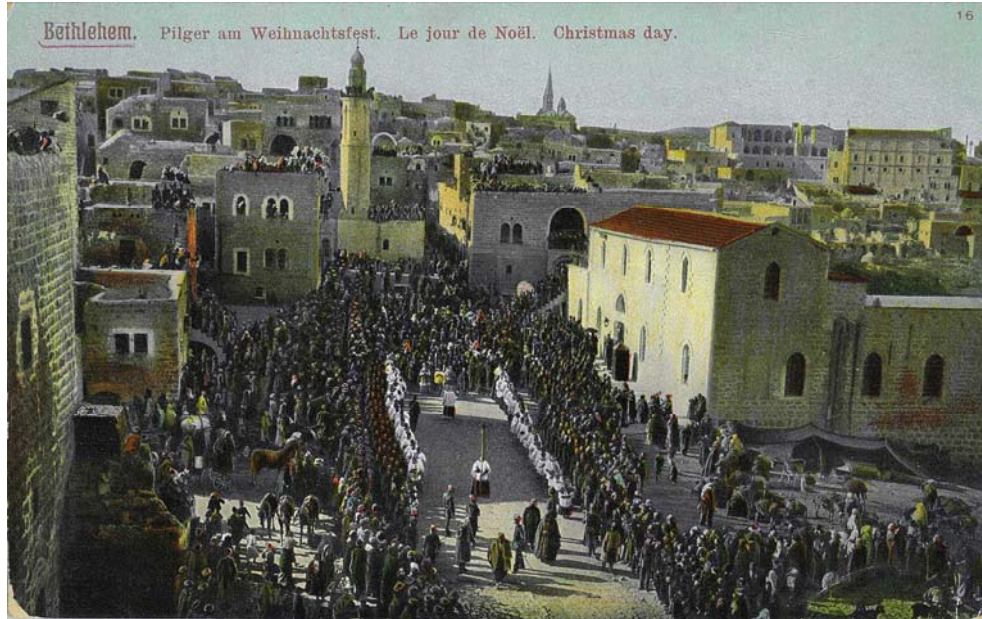


Views of Bethlehem: Then and Now

An exhibition of historical images and contemporary photographs of Bethlehem



Bethlehem, c. 1900

postcard, author unknown

Stebbins Gallery

0 Church Street (corner of Mass. Ave., Harvard Square), Cambridge, MA
Sunday, November 15 – Friday, December 4, 2009

Exhibition Hours:

MONDAYS: 10 am - 6 pm

TUESDAYS: 1 - 9 pm, Nov. 17; 10 am - 6 pm, Nov. 23; 10 am - 1 pm & 3 - 6 pm, Dec. 1

WEDNESDAYS: 10 am - 6 pm, Nov. 18; 3 - 9 pm, Dec. 2

THURSDAYS: 1 - 6 pm, Nov. 19; 1 - 3 pm & 6 - 9 pm, Dec. 3

FRIDAY: 1 - 6 pm, Nov. 20

SATURDAYS: 10 am - 6 pm

SUNDAYS: 12 - 2 pm, Nov. 22 (talks begin at 2 pm in Helverson Parlor); 10 am - 6 pm, Nov. 29

Additional hours by request

Opening Reception

Sunday, November 15th, 3-5 PM

Exhibition Program Talks

Sunday, November 22nd, 2-4 PM

“Current Realities of Palestine,” Abdelfattah Abusrouf, Director, Al-Rowwad Cultural Center (A-RCC), Aida Camp, Bethlehem
“Photographers, Tourists, Sojourners: The Allure of the Holy Land, 1850-1925,” Jeff Spurr, scholar, photo and textile historian

Sponsored by: Cambridge/Bethlehem People-to-People Project

Co-sponsors:

Justice in the Middle East Task Force at First Parish in Cambridge

Stebbins Gallery, First Parish in Cambridge

For more information:

EMAIL: bethlehemcambridge@gmail.com

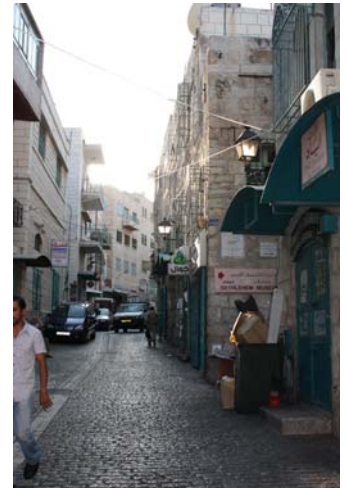
WEBSITE: www.cambridgebethlehem.org

Historical images courtesy of the Fine Arts Library, Harvard College Library

Contemporary photographs by Al-Rowwad Cultural Center Photography Project



Bethlehem street scene, c. 1915 postcard



Bethlehem street scene, 2009 A-RCC



Bethlehem, c. 1880

photochrom, Photoglob Zurich